

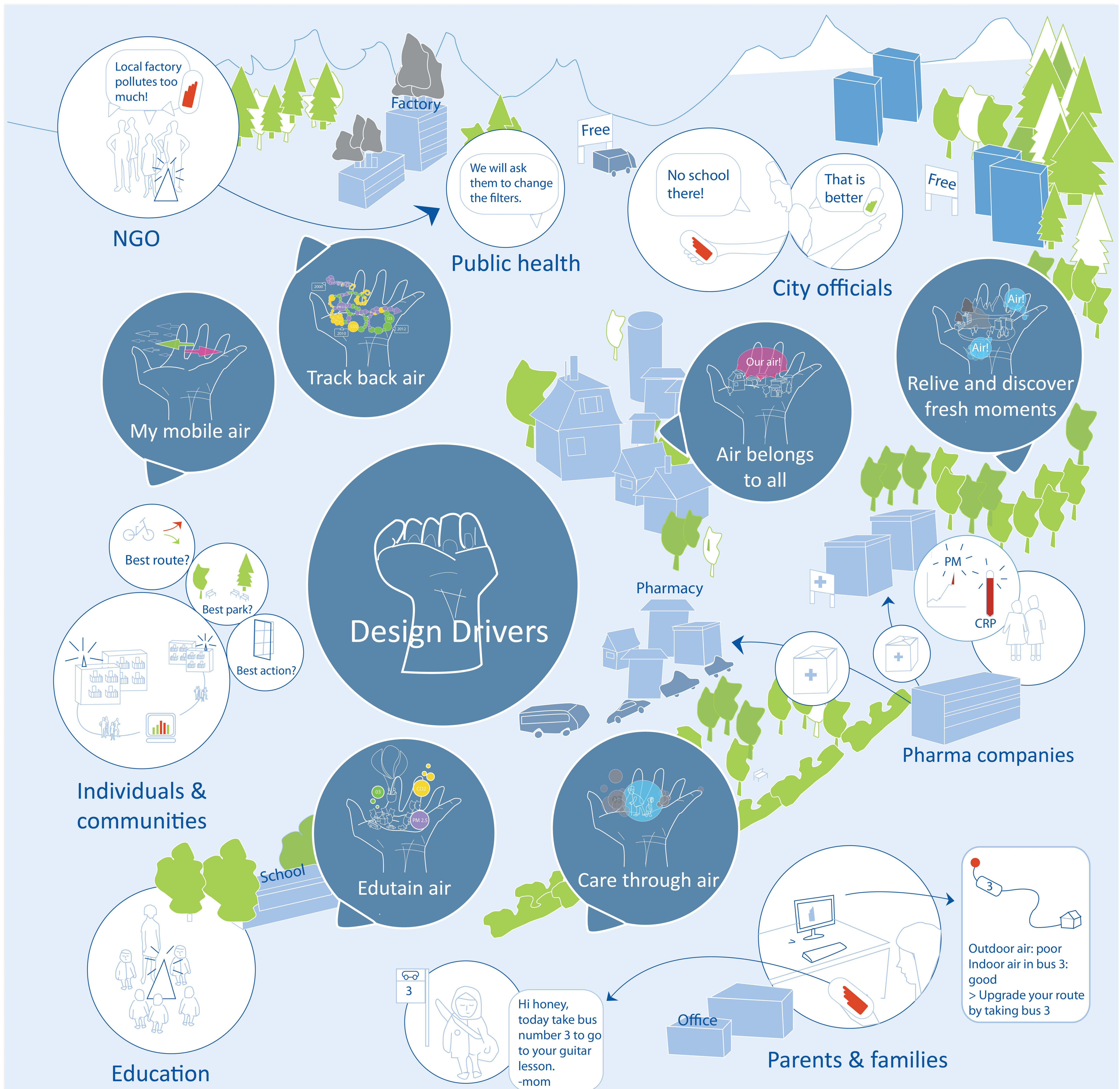
Designing for Mobile Air Quality Services

Riikka Hänninen & Jan Blom

EPFL, Nokia Research Center

NOKIA

EPFL
ÉCOLE POLYTECHNIQUE
FÉDÉRALE DE LAUSANNE



OpenSense+ is a Nokia/EPFL collaboration focusing on sensor network measuring urban air quality. Nokia's contribution is related to the design of mobile services conveying air quality information to urban dwellers. In a recent study, user research was conducted in Helsinki area to assess the impacts of air quality variation on the lives of urban families. Design drivers for mobile air quality services were identified based on the findings. The drivers are depicted above, along with the possible user groups of air quality information.